

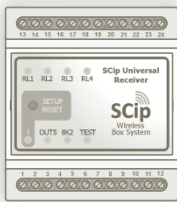
SCip 2 Way Button

STPB-2

Installation guide



For use with:



Universal Receiver



SCD™ series



SCD mini™ series

- Extended battery life
- Two way communication
- Wide operating temperature range
- No electro-mechanical contacts
- Robust and waterproof IP 65 rated ABS enclosure for industrial environments

**SPEED
TECH A/S**



ACTIVATION

1. Remove the buttons:

By loosening the 4 screws.

The product has an internal battery that must be enabled before use.

2. Activate the battery:

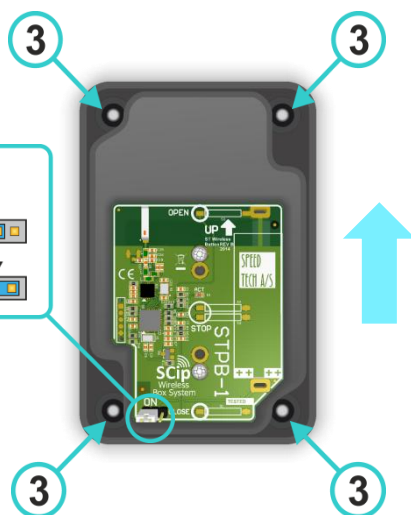
Move the jumper from "OFF" to "ON" position to activate the battery.

3. Mount on wall/surface:

Mount the bottom part on the desired wall/surface with 4 screws, notice the orientation.

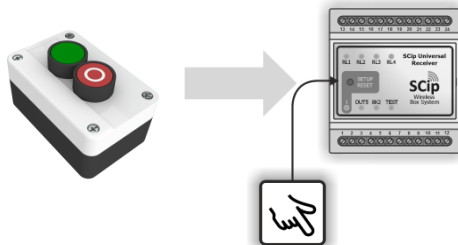
4. Mount the buttons part:

The unit is now ready for pairing with receiving part (step 1).



ADD TO A UNIVERSAL RECEIVER

Repeat the below steps to add the 2 Way Button to a Universal Receiver:

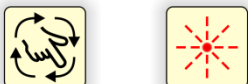


1. Activate programming mode



Press setup/reset once

2. Select output



Press setup/reset multiple times to select the desired output

3. Add



Press and hold one of the buttons for at least 10 seconds

4. Deactivate programming mode



Press setup/reset multiple times to select the ! LED (Or wait approx. 30 seconds)

For pairing with a SCD/SCD mini

- See next page →

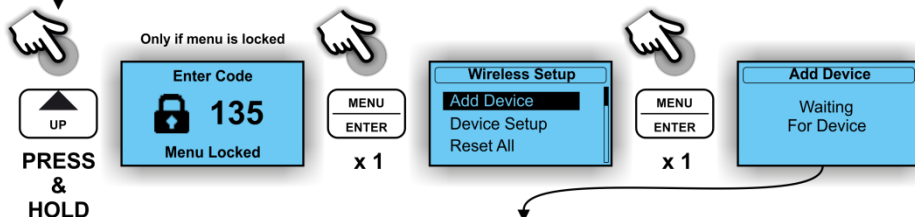
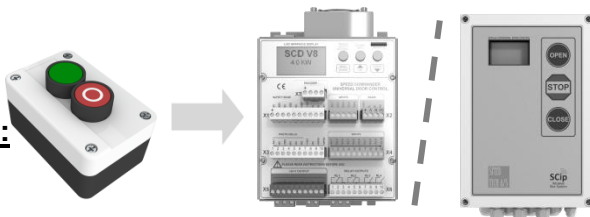
For further information please refer to the Universal Receiver manual.

Icon description:

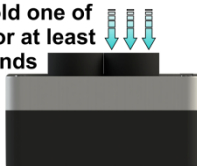
	Single press
	Press and hold for more than 1 second
	Press and hold for more than 10 seconds
	Press to step one or more
	Internal beeper audible feedback
	Lamp flashing
	Lamp lit
	Activate SCip client

ADD TO A SCD OR SCD MINI

Repeat the below steps to add 2 Way Button to a SCD eller SCD mini:



Press and hold one of the buttons for at least 10 seconds



PAIRED
2 Way Button
Serial: xxxxxx

For further information about functionality etc. please refer to the SCD / SCD Mini installation guide.

Technical data:

Wireless range (indoor):	15m
Network type/frequency:	2.4GHz ISM band
Temperature range:	-20 to +40°C
Power supply:	Battery, Lithium 3.6V (AA/FR6)
NEMA IP rating:	65

Dimensions:	Outer dimensions: 105 x 68 x 80mm (H x B x D)
	Mounting holes: 6 x 4.3mm (Slotted hole) - See bottom of product for further details

Weight:	190g
---------	------