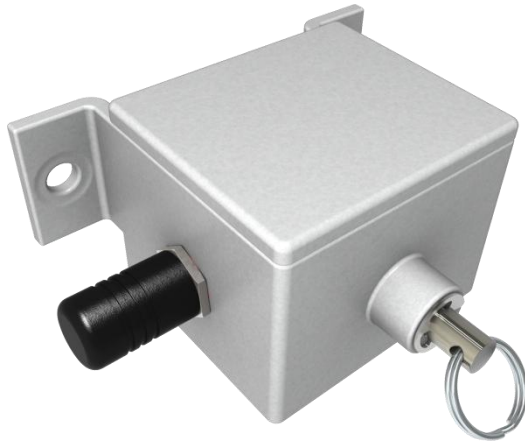


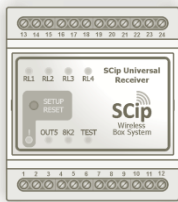
SCip Key Pull Switch

STPS-1

Installation guide



For use with:



Universal Receiver



SCD™ series



SCD mini™ series

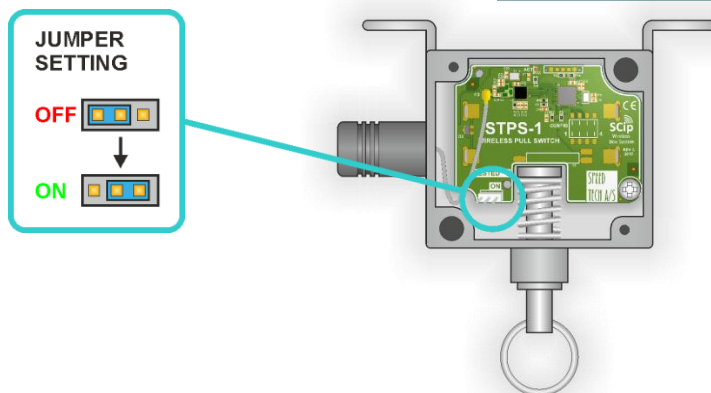
- Long battery life
- Two way communication
- Durable metal housing
- Wide operating temperature span
- Easy wireless installation

**SPEED
TECH A/S**

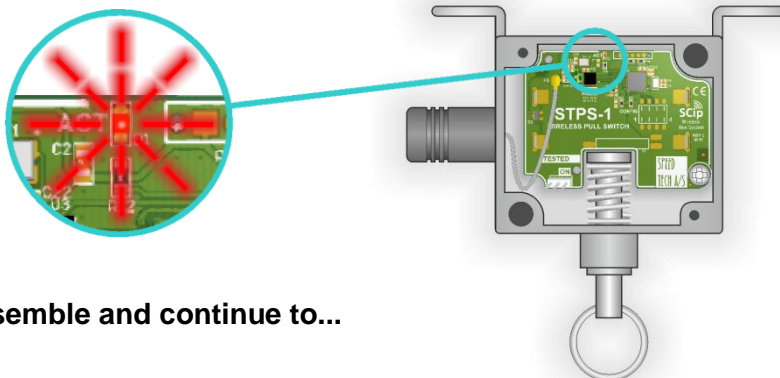
ACTIVATION

1. Remove the cover and move jumper from "OFF" to "ON" position to enable power:

The product has an internal battery that must be enabled before use.



2. Pull the lever to verify that the unit is active and operational:
The red LED will flash 3 times.



3. Assemble and continue to...

...Next page:

Add the Pull Switch to a
Universal Receiver

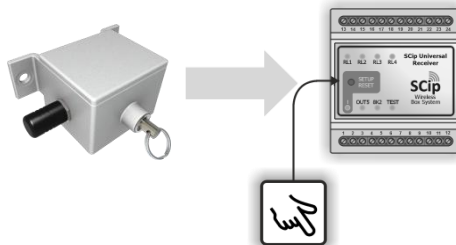
or

...Back page:

Add the Pull Switch to a SCD or SCD Mini

ADD TO A UNIVERSAL RECEIVER

Repeat the steps below to add the Pull Switch to a Universal Receiver:



1. Activate programming mode

Press setup/reset once

2. Select output

Press setup/reset multiple times to select the desired output

3. Add

Activate the device to add to the selected output

4. Deactivate programming mode

Press setup/reset multiple times to select the ! LED (Or wait approx. 30 seconds)

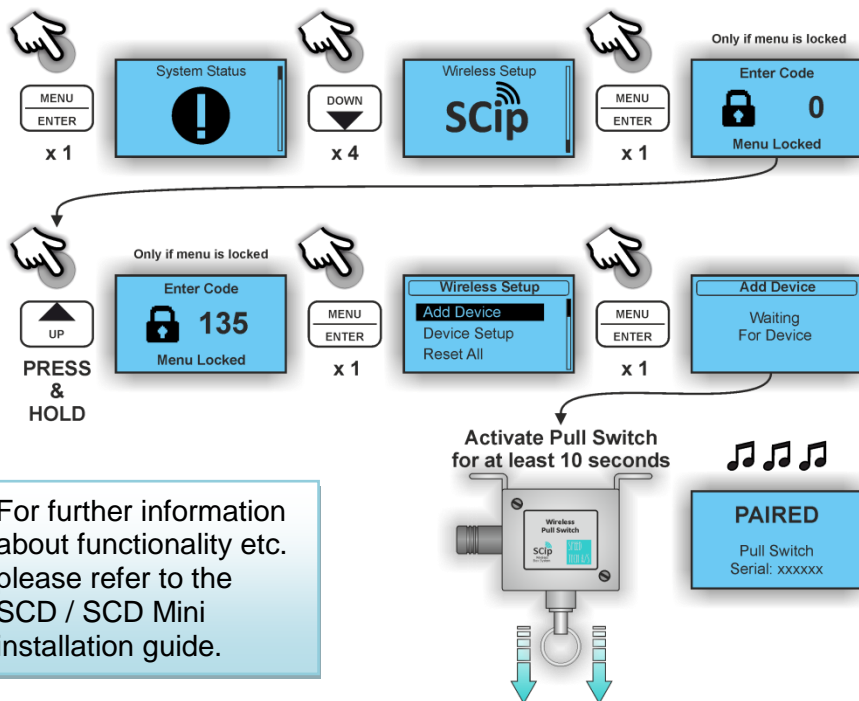
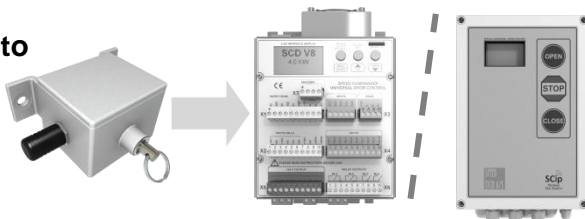
For pairing with a SCD/SCD mini
- See next page →
For further information please refer to the Universal Receiver manual.

Icon description:

- Single press
- Press and hold for more than 1 second
- Press and hold for more than 10 seconds
- Press to step one or more
- Internal beeper audible feedback
- Lamp flashing
- Lamp lit
- Activate SCip client

ADD TO A SCD OR SCD MINI

Repeat the steps below to add the Pull Switch to a SCD or SCD mini:



Technical data:

Wireless range (indoor):	15m
Network type/frequency:	2.4GHz ISM band
Temperature range:	-20 to +40°C
Power supply:	Battery powered, Lithium 3.6V (size AA/FR6)
Ingress Protection Class:	65

Dimensions:	Outside dimensions: 113 x 113 x 62mm (H x W x D)
	Mounting holes: Ø10mm (hole diameter) 102mm (distance between)

Weight:	400g
----------------	------