

# SCip Relay Expansion™

STRE

## Installation guide



For use with:

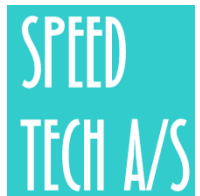


SCD™ series



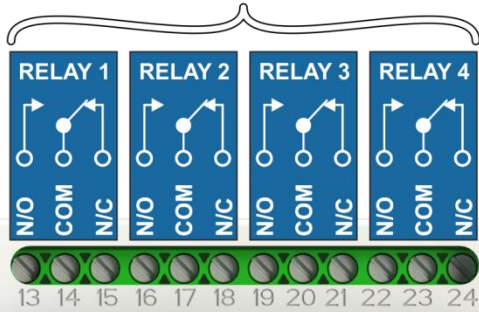
SCD mini™ series

- 4 Wirelessly controlled relays
- Two way communication
- Wide operating temperature span
- Low power consumption (<0.5W idle mode)
- Compatible with DIN rail standard EN 50022



# CONNECTIONS

**Relay outputs:**  
Four individual relays with common, normally open and close terminals.

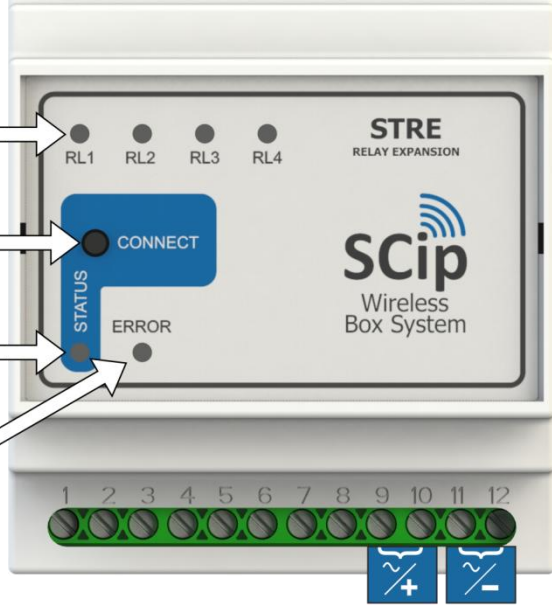


**Relay status LEDs:**  
These LEDs will light up when a relay is active.

**Connect button:**  
Pressing this button will initiate pairing sequence.

**Status LED:**  
This LED will indicate if the unit is operational.

**Error LED:**  
This LED will flash either if the unit is unpaired or if the has beenconnection lost.



**Power input:**  
Will accept any supply voltage between 18 and 26V both AC and DC.

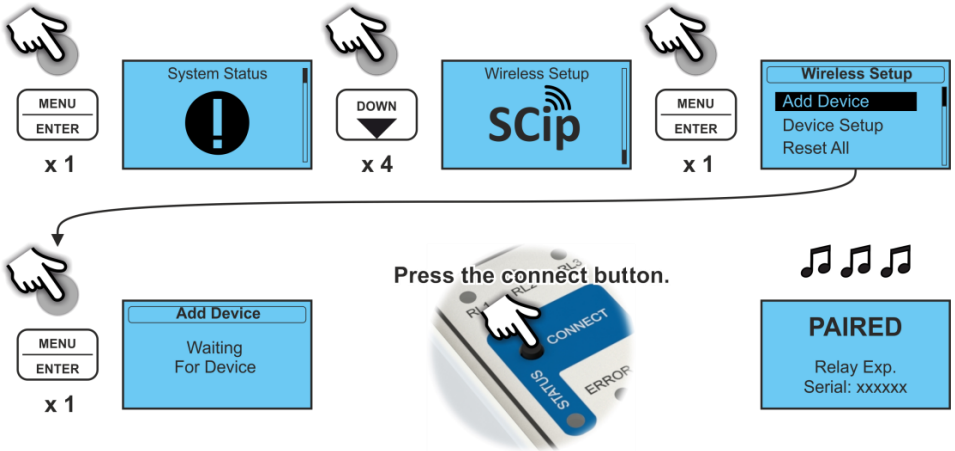
## Connections:

Terminal:	Function:	Details:
9 to 12	Power input	18-26V DC/AC power input
13 to 24	Relay outputs	4 x electrically/galvanically isolated common, N/O and N/C relay outputs

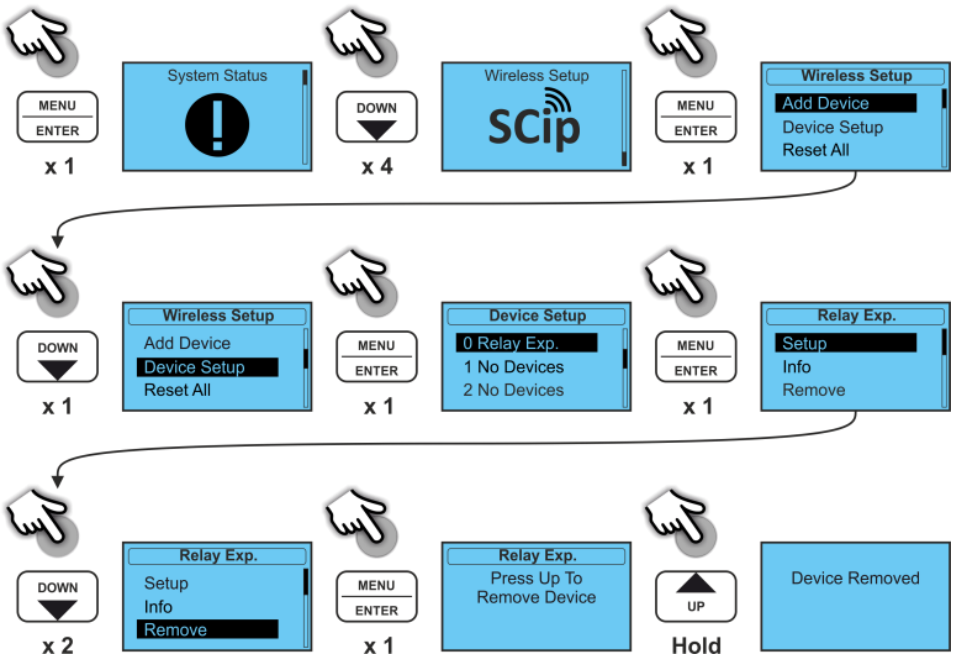
ADD

REMOVE

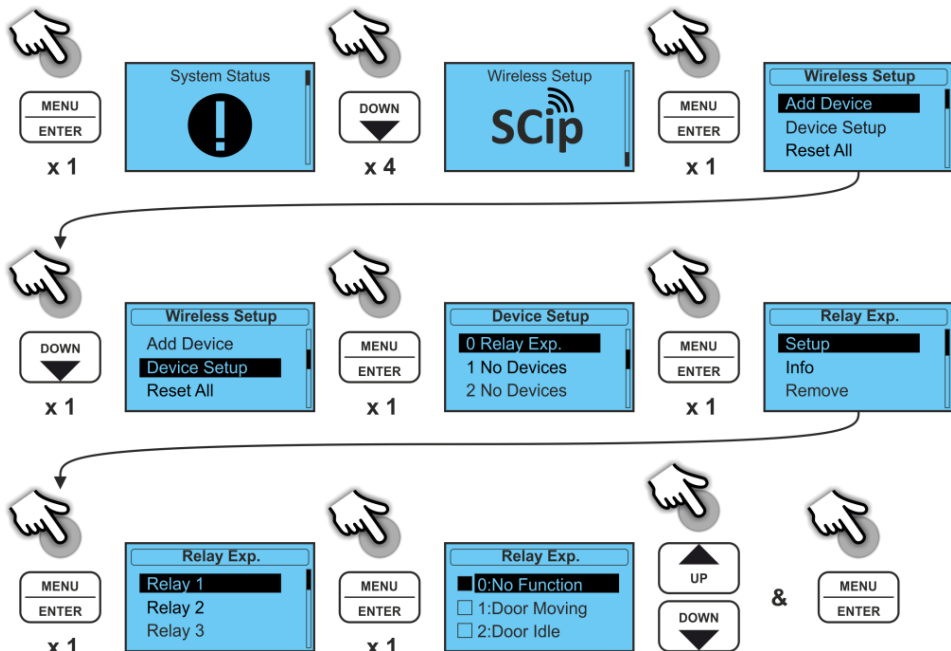
## Adding the STRE to an SCD or SCD mini:



## Removing the STRE from SCD or SCD mini:



# CONFIGURING RELAY FUNCTIONS



Select the desired function using the UP and DOWN buttons. Confirm by pressing MENU/ENTER.

## Troubleshooting:

Problem:	Cause:	Possible solution:
Error LED continually flashing	No connection to host	Reposition STRE closer to host.
No relay function	Configuration missing	Reconfigure relay functions
No light in status LED	No power	Check power connections

## Technical data:

<b>Wireless range (indoor):</b>	15m	
<b>Network type/frequency:</b>	2.4GHz ISM band	
<b>Relay outputs:</b>	4 (each with common, N/O and N/C terminal)	
<b>Relay contact ratings (res.)</b>	120V AC / 0.5A - 24V DC / 1A - 60V DC / 0.6A	
<b>Latency:</b>	500mS max.	
<b>Power supply:</b>	18-26V AC/DC - 50mA max. at 24V DC	
<b>Temperature range:</b>	-20~50°C	
<b>NEMA IP rating:</b>	20	
<b>Dimensions:</b>	<b>Outer dimensions:</b> 86 x 70 x 58mm (HxWxD)	<b>DIN standard top hat rail EN 50022:</b> 35 x 7.5mm (rail HxD)
<b>Weight:</b>	150g	